

Tourism



Tourism is one of the world's largest industries. In many regions it is also the greatest source of revenue and employment. Tourism demand is based on the values and needs of modern tourists, while tourism supply integrates economic and non-economic activities entailing a multitude of effects – also on the environment. Tourism increases the burden on natural resources, such as potable water, energy sources, undeveloped land (e.g. coast, plots of land suitable for golf courses), and generates significant quantities of pollutants with solid waste, waste water and gaseous emissions into the air. Such environmental stresses are greatest at the peak of tourist seasons.

Preservation of the environment is essential for tourism, especially in Slovenia, since 60 % of tourists come here to enjoy the natural environment, peace, relaxation and climate. As key advantages and opportunities for Slovenia in the area of tourism, the National Environmental Action Programme, the Biodiversity Conservation Strategy in Slovenia and the Slovenian Tourism Strategy 2002-2006 indicate preserved natural values as well as great biological and landscape diversity which, however, are to remain as such in order to maintain their advantageous position. Consequently, the all three above mentioned documents state sustainable development as one of fundamental concepts for tourism development.

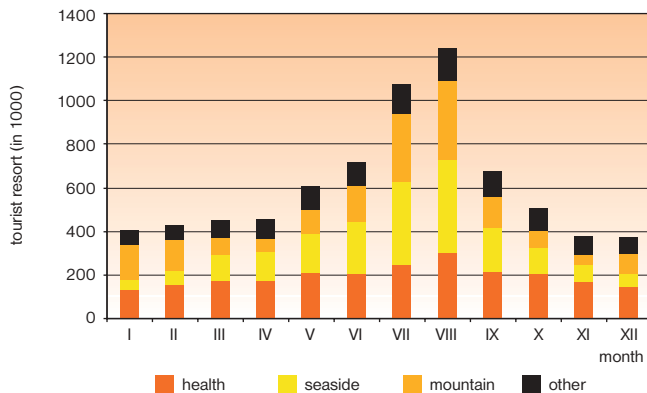
The selected indicators show that tourism in Slovenia has gathered momentum: the occupancy of existing tourist accommodation facilities is on the increase, entailing a lesser spatial burden but a greater burden on natural resources (such as, e.g. potable water). The latter especially poses a major problem at the height of the tourist season during drier summer months. Spatial distribution of prime tourist resorts with respect to protected natural areas is favourable and clearly shows the importance that protection of areas of natural significance has for tourism. Also heightened is the level of awareness about the importance of outstanding natural features which manifests itself in the extended supply and increasing popularity of such tourist establishments.

43. DEVELOPMENT AND DISTRIBUTION OF TOURISM



The indicator shows the trends in the number of available beds and the number of overnight stays of tourists in Slovenia, as well as their temporal and spatial distribution across Slovenia, primarily with regard to proximity of protected areas.

Figure 43-1: Distribution of overnight stays in Slovenia by month and type of tourist resort in 2002



GOAL

In the section entitled Tourism, the National Environmental Action Programme envisages directing practices towards the development of sustainable forms of tourism. These would ensure sound utilization of space as well as environment-friendly activities, facilities and the development of tourism supply which will take great consideration of natural and cultural identities in marketing. The National Environmental Action Programme considers management of mass tourism as one of most essential measures in the area of environmental protection wherever the latter might cause unacceptable degradation of the environment.



Figure 43-2: Trends in the number of available beds and the number of overnight stays in Slovenia (index with the base year 1992=100)

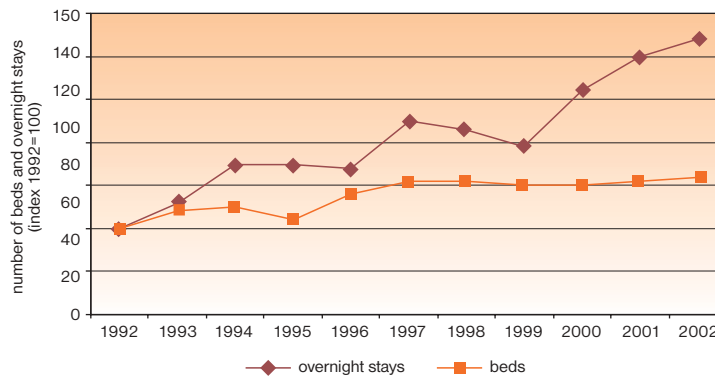
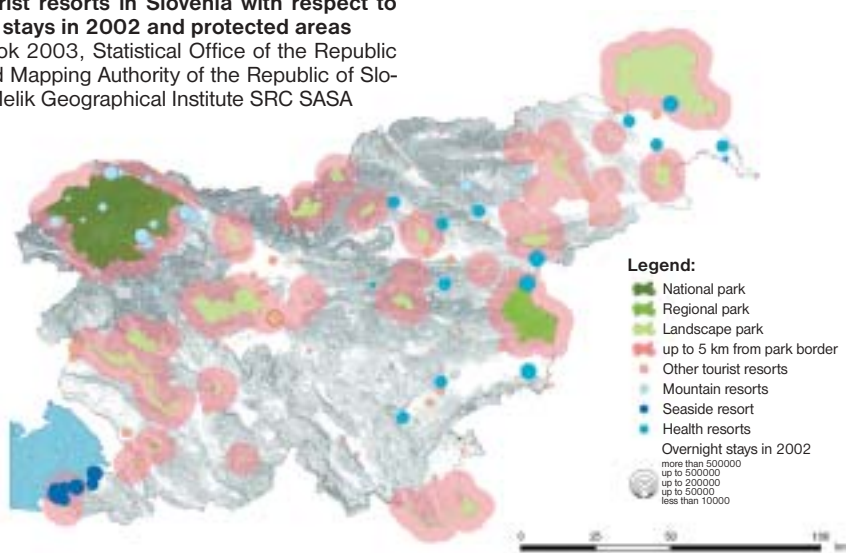


Figure 43-3: Map of tourist resorts in Slovenia with respect to the number of overnight stays in 2002 and protected areas

Source: Statistical Yearbook 2003, Statistical Office of the Republic of Slovenia; Surveying and Mapping Authority of the Republic of Slovenia; basic layer: Anton Melik Geographical Institute SRC SASA



Following the drop in the number of tourists and tourist capacity in Slovenia in the wake of the Independence War, tourism has been steadily regaining momentum since 1992 in respect of the number of available beds and, in particular, in respect of the number of overnight stays. In 2002, there were 7 321 100 overnight stays in 80 034 beds meaning that, on average, beds were occupied for a quarter of the year (i.e. 91 nights). The distribution of overnight stays throughout the year however, shows that tourist bed occupancy rates were highest during summer months, when the majority of tourists visit seaside tourist resorts (in August 2002, a little more than one third of total overnight stays was recorded in seaside tourist resorts), with a little smaller share visiting mountain and health resorts.

Environmental loading, increased by tourism development, is caused principally by the rise in quantities of potable water consumption, waste water and solid waste, the burden on utilisation of land intended for accommodation facilities, as well as gas emissions and other burdens arising from tourism-related transport operations. The relationship between the great bio-

diversity of many Slovenian regions, which accompanied by the concept of “natural beauties”, constitutes one of the prime components of Slovenian tourist supply, and the stresses exerted by tourism industry on natural beauties, especially in sensitive habitat types such as, e.g. karst caves or areas where disturbance sensitive species breed is particularly vulnerable. Spatial distribution of the principal Slovenian tourist resorts clearly shows the importance of such interdependence with the majority of larger tourist resorts lying in the vicinity rather than within protected environmental areas.

The above listed sub-indicators permit a neutral assessment of the development and distribution of tourism in Slovenia. Increased occupancy of existing tourist accommodation facilities entails a reduced spatial burden but, at the same time, a greater burden on natural resources. The latter especially poses a major problem at the peak of the summer tourist season. Spatial distribution of tourist resorts, indicating the importance of environmental protection which is also relevant for future tourism development is, however, favourable.

DATA AND SOURCES

Table 43-1: Distribution of overnight stays in Slovenia by month and type of tourist resort in 2002

Source: Statistical Yearbook 2003, Statistical Office of the Republic of Slovenia; processed by Environmental Agency of the Republic of Slovenia

tourist resorts	unit	I	II	III	IV	V	VI	VII	VIII	IX	X	XI	XII
health resorts	number (in 1000)	132.3	155.7	174.6	174.7	210.3	202.8	246.3	300.6	213.2	203.4	168.5	144.7
seaside resorts	number (in 1000)	46.1	66	116.5	129.7	175.8	243.2	383.9	428.5	202.1	121.2	81.5	57.5
mountain resorts	number (in 1000)	158.2	139.2	77.9	62.6	116.7	161.6	310.2	362.3	144.6	80.7	42.4	91.8
other	number (in 1000)	65.6	63.8	83.7	91.9	108.3	109.7	134.1	154	119	102.7	85.7	75

Table 43-2: Trends in the number of available beds and the number of overnight stays in Slovenia (index with the base year 1992=100)

Source: Statistical Yearbook 1996, 2000, 2003, Statistical Office of the Republic of Slovenia; processed by Environmental Agency of the Republic of Slovenia

	unit	1992	1993	1994	1995	1996	1997	1998	1999	2000	2001	2002
overnight stays	index (1992 = 100)	100	106	115	115	114	125	123	119	132	140	144
beds	index (1992 = 100)	100	104	105	102	108	111	111	110	110	111	112

The data used have been issued by the Statistical Office of the Republic of Slovenia, published in Statistical Yearbooks of the Republic of Slovenia.

Data on capacities of tourist accommodation facilities (number of rooms and beds) and on tourist arrivals and overnight stays are reported monthly to the Statistical Office of the Republic of Slovenia by companies and other organisations providing accommodation to tourists or providing such services as an agency, as well as individuals who let private rooms. The data are based on total coverage.

An overnight stay is every night that a tourist actually spends (sleeps or stays) or is registered (his/her physical presence there not being necessary) in an accommodation establishment.

A tourist resort is any place meeting the following specifications:

- is attractive (natural beauties, health spas, cultural and historical monuments, cultural, entertainment and sporting events, etc.),
- has communications facilities (accessibility, transport connections, etc.),
- has reception facilities (accommodation establishments with accompanying trade, crafts and postal services as well as parks, promenades and bathing facilities, etc.).

Places meeting the above criteria for "tourist resorts" are further divided into the following groups:

- health resorts (i.e. places where the healing effect of thermal or mineral waters or other geological mineral components is medically or empirically proven. These include climatic, mineral water and thermal water health resorts which, as a rule, also provide suitable facilities for recovery and rehabilitation of the health of visitors.),
- seaside resorts (i.e. places located along the sea coast),
- mountain resorts (i.e., as a rule, places situated more than 500 metres above sea level or in the territorial area of a mountain), and
- other tourist resorts (i.e. places with particularly attractive elements, e.g. climate conditions, cultural or historical monuments, etc., riverside and lakeside areas and other places that cannot be classified among any of the above mentioned places, and the Slovenian capital - Ljubljana).

Data regarding protected natural areas nature derive from the Register of protected areas, Environmental Agency of the Republic of Slovenia, and are taken from the Collection of digital maps and raster base maps, Environmental Agency of the Republic of Slovenia.



44. OUTSTANDING NATURAL FEATURES VISITED

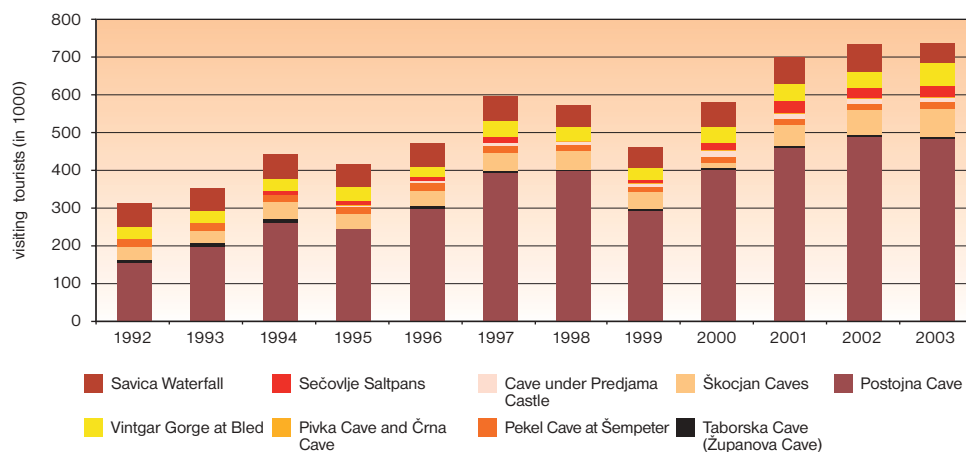
The indicator shows the number of tourists visiting selected outstanding natural features within a calendar year. The selected outstanding natural features are tourist attractions with natural beauties according to the definition by the Statistical Office of the Republic of Slovenia and are included in continuous monitoring of tourist visits.



GOAL

In the section entitled Tourism, the National Environmental Action Programme envisages directing practices towards the development of tourist supply which will take great consideration of natural and cultural identities in marketing. One of the targets identified within the Biodiversity Conservation Strategy in Slovenia is the creation of a more balanced and sustainability-oriented tourist supply incorporating outstanding natural features and taking into account the potential of the entire country as well as the threat to individual outstanding natural features.

Figure 44-1: Annual number of tourists visiting selected outstanding natural features in Slovenia



The indicator shows development in the tourist popularity for selected outstanding natural features in Slovenia. Visits and number of entrance tickets for visits to outstanding natural features also depend on their presentation and organisation. In the period 1992-2003, the total number of organised visits more than doubled. The number of sites arranged by responsible operators for tourist visits is also increasing, thus enabling safe and guided experience of outstanding natural features and at the same time, the latter's protection from

excessive loading. This is especially important in sensitive habitats such as karst caves. By granting a concession to the operator of the Postojna Cave (Decree on the Concession for Utilisation of Valuable Natural Features of the Postojna and Predjama Cave Systems, OJ RS No 77/2002), a step forward in the realisation of the National Environmental Action Programme envisaging the introduction of assigning concessions for tourist consumption of natural resources has also been made.

DATA AND SOURCES

Table 44-1: Annual number of tourists visiting selected outstanding natural features in Slovenia

Source: Visits to selected tourist sights, casinos, swimming facilities, museums and galleries, Results of Surveys 661/1996, 681/1997, 708/1998, 736/1999, 738/2000, 745/2001, 771/2002, 787/2002, Statistical Office of the Republic of Slovenia; Visits to selected Tourist Sites, Casinos, Swimming Facilities, Galleries and Museums, and Number of Days of Operation, Slovenia, Rapid Reports 21, 148/2004

natural sites	unit	1992	1993	1994	1995	1996	1997	1998	1999	2000	2001	2002	2003
Postojna Cave	number (in 1000)	155.5	197.5	261.8	244.8	301.1	393.7	398.9	294.2	403.2	460.5	489.1	484.3
Taborska Cave (Županova Cave)	number (in 1000)	8.7	9.4	11.5	0.63	3,7	5.1	4.9	4.3	4.1	5.3	5.0	4.4
Škocjan Caves	number (in 1000)	32.0	33.9	42.1	41.6	41.3	47.2	48.6	44.7	15.6	56.8	67.3	75.4
Pekel Cave at Šempeter	number (in 1000)	21.8	21.4	19.7	17.8	20.8	19.1	16.3	14.1	15.7	14.7	14.1	16.0
Otoška jama	number (in 1000)	n/a	n/a	0.1	0.6	0.2	0.1	n/a	n/a	n/a	n/a	n/a	n/a
Cave under Predjama Castle	number (in 1000)	n/a	n/a	0.9	3.8	5	6.7	6.3	7.4	12.3	13.9	13.7	10.8
Pivka Cave and Črna Cave	number (in 1000)	n/a	n/a	n/a	1.6	2.3	2.3	3.2	2.3	2.9	3.3	3.0	3.1
Sečovelje Saltpans	number (in 1000)	n/a	n/a	9.3	8.1	10	14	n/a	9.9	20.3	29.2	25.6	30.8
Vintgar Gorge at Bled	number (in 1000)	33.5	30.2	33.1	39.6	27.4	43.7	37.6	32	43.3	45.2	44.0	60.2
Savica Waterfall	number (in 1000)	61.2	58.1	64.3	59.6	60.2	64.8	56.9	53.1	62.7	71.8	72.2	50.5

The sources of data are notices in publications, Results of surveys and Rapid Reports 21 by the Statistical Office of the Republic of Slovenia. The data have been aggregated through collecting reports on tourists visiting tourist sites, casinos and swimming pools that are communicated to the Statistical Office of the Republic of Slovenia by managers of tourist establishments in respect of the number of entrance tickets sold.